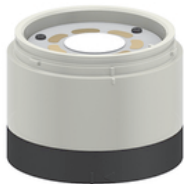
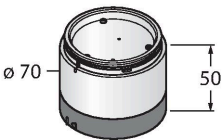


SG-TL70B-B

LED Signal Light – Modular Signal Tower

Color Segment



Technical data

Type	SG-TL70B-B
ID	3814495
Signal and display data	
Purpose	LED indicator light
Function	Tower light
Light type	Blue
Wavelength	470 nm
Luminous flux lumen	32 lm
LED service life (L70)	50000 h
Dimmable	No
Electrical data	
Operating voltage U _B	12...30 VDC
Response time typical	< 180 ms
Mechanical data	
Cascadable	No
Design	Cylindrical/Smooth, TL70
Dimensions	Ø 70 x 50 mm
Housing material	Plastic, PC
Window material	Plastic, diffuse
Ambient temperature	-40...+50 °C
Protection class	IP65
Tests/approvals	
Approvals	CE, UL listed

Features

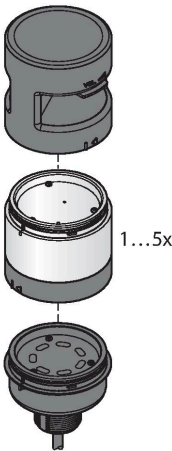
- Plastic housing, black
- Protection class IP65 (mounted)
- Monochrome: Blue
- Switchable between permanent and flashing function
- Operating voltage: 12...30 VDC
- Inputs: PNP/NPN

Functional principle

The rugged multifunction tower lights are available in many variations and are easily mounted. Each tower can be assembled of up to five color segments and, optionally, a beeper. All segments are configurable via DIP switches.

5 colors are available, blue (B), green (G), red (R), yellow (Y) and white (W), which can be used in any combination.

The arrangement of the segments can be modified subsequently and also more segments can be added. Via the basic module the respective port is selected.



Accessories

Dimension drawing	Type	ID	
	B-TL70-5	3092223	TL70 base module, black, cable, 5-pin, 2 m, connection of 4 segments possible
	B-TL70-8	3092224	TL70 base module, black, cable, 8-pin, 2 m, connection of 6 segments possible
	B-TL70-Q5	3092226	TL70 base module, black, connector, 5-pin, M12 x 1, connection of 4 segments possible
	B-TL70-Q8	3092227	TL70 base module, black, connector, 8-pin, M12 x 1, connection of 6 segments possible