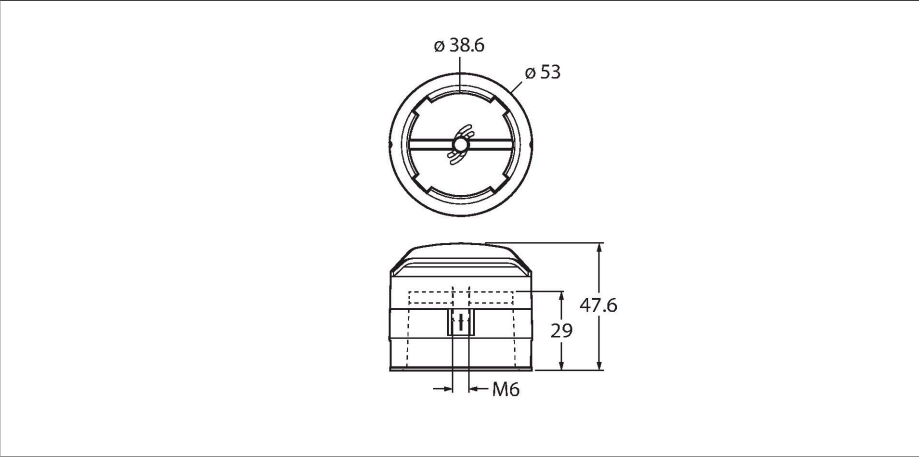


# BTS-DSC26-EB20

## Mounting Accessories – Actuator (puck)



### Technical data

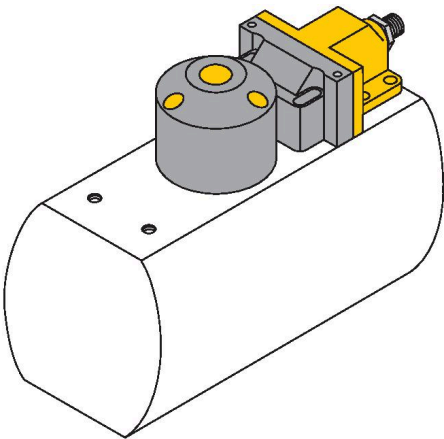
Type	BTS-DSC26-EB20
ID	100002102
Design	Accessories for dual sensor, Ni4-DSC26-..., Ni4-DSU26...
Dimensions	47.6 mm
Housing material	Plastic, PA6
Tightening torque fixing screw	3 Nm
Included in delivery	1 pcs. countersunk screws: M6 x 16, DIN 7991-A2

### Features

- End position damped
- Displays rotatable by 90 °
- Hole pattern on flange: 80 x 30 mm
- Connection shaft (shaft extension) height: 30 mm/Ø: max. 38 mm
- Available as an option: Spacer BTS-DSC26-UR10 for 20-mm-high connection shafts (shaft extension)

### Functional principle

Dual sensors are especially designed for position detection in rotary actuators. They combine the reliability of non-contact inductive sensors with the flexibility of a modular housing system. A broad range of practice-oriented accessories ensure optimal adaption to your system.



### Accessories

BTS-DSC26-UR10	100002103
----------------	-----------

Spacer for dual sensor actuation  
kitBTS-DSC26-EB20

